

WOLDUMAR nature center

2015-16 Annual Report



Letter from Board Co-Chair, Andria Ditschman

This year, as Co-Chairs to the Board, Zachary Behler and I have had the pleasure of overseeing positive growth at Woldumar.

Under Kevin Wernet's direction, and the help of his staff, volunteers and Board members, Woldumar Nature Center has achieved its goals of systematically applying for grants as a funding source in addition to expanding membership and program participation, increased the Board members from 8 to 11, and has put its financial house in order.

Since my husband and I moved to Mid-Michigan 18 years ago, Woldumar has played an important part in our family's lives. Like many of you, we've logged miles on the diverse trails and have enjoyed boat rides, festivals and runs. Our children have caught frogs, toads and crayfish, identified owls in the trees, and met new friends at day camps, and we've volunteered for programs and Boy Scout projects. We have also just sat on the bench and watched the Grand River flow.

This will be my last term on the Board after serving since 2008. It has been a pleasure serving and as my thank you to the nature center, I will be joining Woldumar as Life Member. Please consider making the commitment to join me by donating \$1,000 or more to the Woldumar Endowment Charitable Trust. I look forward to seeing you on the trails!

Thank You Sylvia Colles!

The Staff and Board of Directors would like to recognize the service of Sylvia Colles.

Sylvia has served on the Board of Directors since 2010, and will be stepping down at the end of this year. During her time on the board, Sylvia served on the Personnel Committee and the Program Committee, and as a volunteer at many events. Sylvia is also a regular contributor to the newsletter, and served as Woldumar's webmaster for a long time.

Perhaps her greatest contribution has been serving as curator of the Herb Garden outside the Moon Cabin. In that role, Sylvia not only planted and cared for that area, but educated visitors and staff about the importance of the various plantings.

Sylvia plans to remain involved as a volunteer at Woldumar, caring for the herb garden and helping out wherever she can!

2015-16 Volunteers



Art Kyler, Game Tables

ABNL Student Stewardship



"Pokemon Go" Volunteer Social

Reith Riley



Emergent Biosolutions

Voya Financial



Lansing Catholic Central

Clark Tree Service
Wright Tree Service
Woods Arbor Solutions



Thank you to these volunteers and many more!



Letter from the Executive Director

I'm not much of a gardener. In spite of the work I've done to improve my garden's soil and keep it weeded and watered, due to the shade in our yard and the clay in our soil — not to mention the limited time I have in the summer — our annual yields are nothing to brag about.

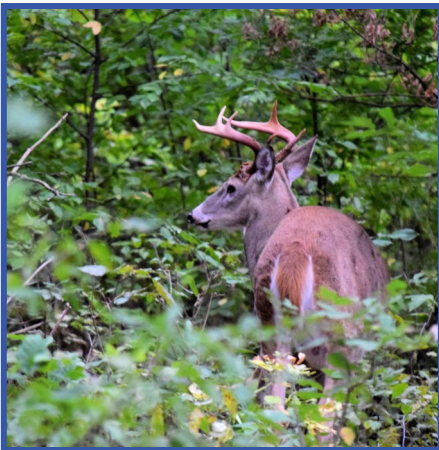
Despite that, it's a hobby I genuinely enjoy.

The single factor that keeps me coming back is the seeming magic of it all. You start a seed in the soil and wait. For days, sometimes weeks, nothing happens. You're watering dirt. You begin to wonder if you bought a dud seed packet. And then, one day, there's a difference. Green life begins to unfold above the surface. The next day there is more growth, and the day after even more. The change is so fast, it's shocking. Many summer evenings after work, I go home and walk around my garden. I might pull a few weeds or pick an early ripe tomato, but most of the time I'm just monitoring and admiring the growth. Here's a squash tendril where yesterday there was nothing. Here's a flower. Here's a fruit. That sudden, surprising, remarkable growth is amazing.

When I started in this position in February of 2015, our goal was to bring some stability to the organization. We took an organized approach to fundraising. We scaled back our commitments to make things manageable for our new program director, while staying true to the mission and character of the organization. This work sometimes felt like "watering the dirt," which isn't the most exciting message to communicate to members or the most inspiring mantra for a staff. However, it has been a crucial first step to moving this organization into the future.

At this time, I'm happy to share that the organization is standing on firm ground, or (keeping with the analogy) we're planted in fertile soil. Both program participation and charitable giving are strong. We have been awarded grants and seen community partners interested in supporting our programs and projects during the last year.

It is my goal to grow Woldumar into a premier location for science and nature education in the Greater Lansing area, with programs and resources that engage schools and the community at large — emphasizing early childhood education and innovative improvements to our Visitor Center. We are expecting 2017 to be a season of remarkable growth. We invite you to continue to partner with us as members, supporters and program participants and enjoy the best of what Woldumar has to offer.



Online Presence



E-mail Subscribers:

2,002



Facebook Likes:

3,811



**Google Searches
for "Woldumar"**



Website Visits

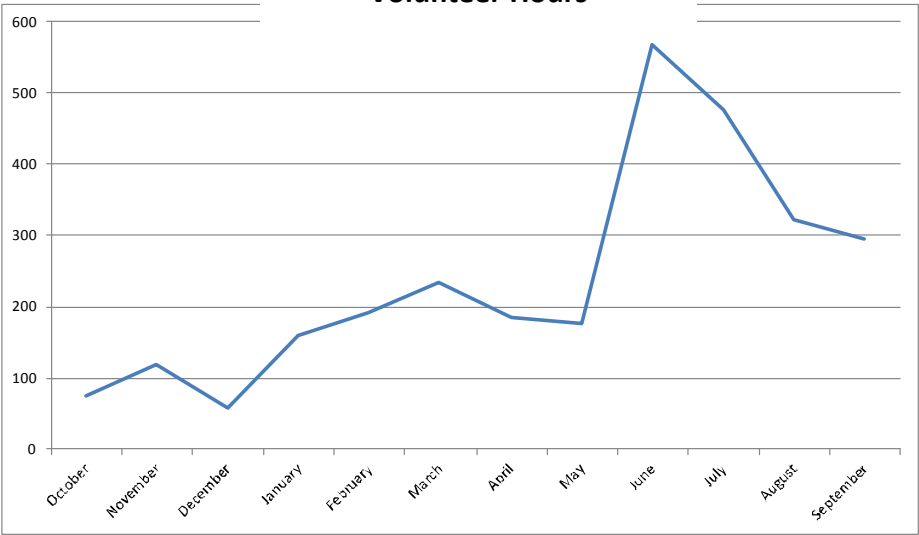


A Year of Volunteering

Total Volunteers:
132

Total Volunteer Hours:
2,845
Compare to 2,062 in 2015

Volunteer Hours





Letter from the Program Director

At Woldumar, we educate people about the natural world in many ways. Part of our programming is stewardship and conservation. Being a nature lover and outdoor enthusiast I feel it is important to inspire people to love and care for the world we all live in.

One of my favorite memories from this past year was building animal habitats out of downed logs and sticks with first through third graders. Not only did it help clean up our forest floor, we provided easy shelter for many of the woodland creatures scurrying about. Once the project was completed the students were disappointed. They did NOT want stewardship to be over. We had an excellent conversation about what they can do in their own neighborhoods on a daily bases to contribute to nature in a positive way. The students left energized and ready to do “work” at home. I do not know if they actually went home and picked up litter or built more animal habitats, but I do know for sure they felt that innate biophilia we as humans share. They felt connected.

2017 is an exciting time for Woldumar. We have well established, organized programs such as GM Green, on campus field trips, traveling naturalist field trips and our famous summer and break camps. We have launched our teambuilding ropes course and our Boy Scout programs are beginning to gain traction.

I would like to thank each one of you for supporting our mission, and we will continue to work diligently to educate people about the wonderful nature around us.



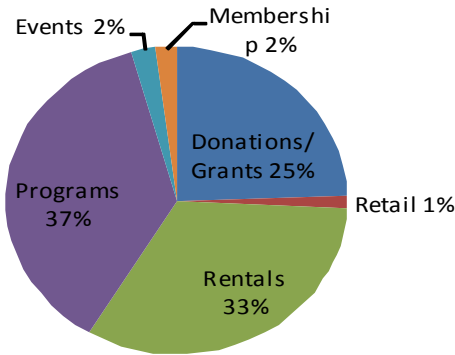
2016 Summer Camp Staff

Woldumar Programs

BY THE NUMBERS

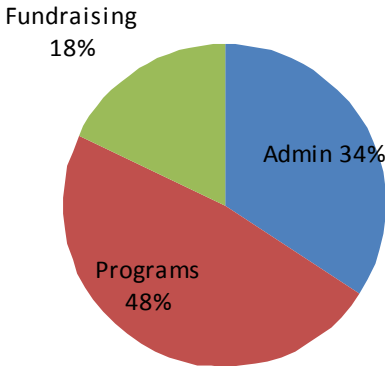
Program Name	Description	Total Participation	Revenue
Field Trips	On-site and off-site environmental education programs with schools	3026 students in 132 classes	\$12,145.50
Camp Discovery	Eight weeks of summer day-camp, spring break and winter break	363 campers + 2 contracted camps	\$75,129.50
Annie's Big Nature Lesson	Five days of nature programs with schools	750 students in 25 classes, over 14 weeks	\$10,850.00
Teambuilding Ropes Course	Businesses, teams, and classes work on communication and creative problem solving	8 groups	\$3,600.00

Treasurer's Report



Revenue*	
Donations/ Grants	\$68,276.24
Retail	\$3,693.76
Rental	\$90,693.05
Programs	\$103,465.04
Membership	\$6,370.42
Events	\$5,382.00

TOTAL \$277,880.51



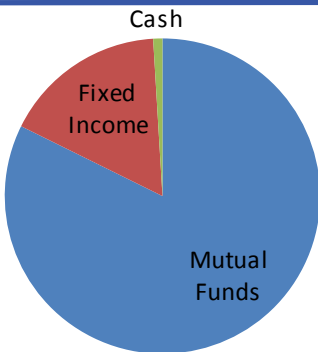
Expenses*	
Admin.**	\$99,659.57
Programs	\$139,624.02
Fundraising	\$52,172.02

TOTAL \$291,455.61

*Does not include endowment activities (included on other annual statements).

**Includes \$22,000.04 depreciation (non-cash) expense.

Endowments



WECT Balance:	\$568,747.01
CRCF Balance:	\$13,086.59
TOTAL	\$581,833.60

Woldumar Nature Association Board of Directors

Co-Chairpersons:

Andria Ditschman, JD,
Andria Ditschman Law, PLLC

Zachary Behler, JD,
Foster, Swift, Collins & Smith, P.C.

Vice Chairwoman:

Anne Garwood,
*Michigan Department of
Environmental Quality*

Treasurer:

Julie Pfeifle, CPA,
Andrews Hooper Pavlik PLC

Secretary:

Frank Tegge,
Wells Fargo Advisors

Sylvia Colles,
*Michigan Department of Education
(Ret.)*

Irene Bashore,
General Motors Co

Gail Vander Stoep, Ph.D.,
Michigan State University

Aaron M. McNulty, BBA,
*Michigan Conference of
Seventh Day Adventists*

Jason Wilkinson,
Michigan Veterans Affairs Agency

Karen Russcher M.L.A., ASLA, RLA,
Michigan State University

Woldumar Staff

Executive Director:

Kevin Wernet

Program Director:

Brittney Mulka

Hospitality Manager:

Victoria Churchill

Office Manager:

Sally Austin

Groundskeeper:

Kevin Feldpausch



Our Great Team of Fall Naturalists

By Members, For Members

The Woldumar Nature Association is a private, 501(c)3 non-profit organization managed by its members, for its members, and for the Greater Lansing Community.

The staff and board of directors would like to challenge our membership to help strengthen and grow the organization in two specific ways:

1) Growing Membership

Do you have a friend or family member who would support our environmental education and preservation efforts? *In the coming year, think about sharing Woldumar with at least one person by encouraging them to join or by purchasing a gift membership for them!*

2) Growing The Woldumar Endowment Charitable Trust

The Woldumar Endowment Charitable Trust provides a reliable and enduring source of income to support Woldumar's programs.

100% of a \$1000 life membership payment goes into the endowment, so not only do your member benefits last for your lifetime, the benefit to the Woldumar community will last for the lifetime of the organization as well.

Endowment contributions can be made in any amount however, and every contribution helps ensure that this wonderful resource will be here for generations to come! *Please consider a contribution to the Endowment this year!* Donations can be sent to Woldumar with a note or memo that it is intended for the Endowment.

Woldumar Endowment Charitable Trust Trustees:

JB McCombs
State of Michigan

Gary Pike
Multi Packaging Solutions

Steve Cessna
Bank of America (Ret.)